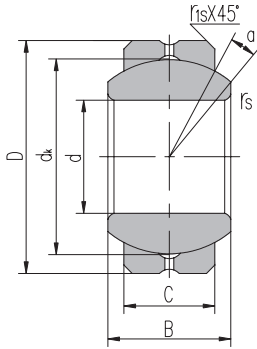


SPHERICAL PLAIN BEARINGS – INCH

COM SERIES



Specifications

- Sliding Surface: Steel on Steel – Chrome Plated Ball
- Relubricatable through annular grooves & oil holes in inner ring

Part #	Ref #	Dimensions (inches)								Load Ratings kN		Weight LBS
		d	D	B	C	d _k	r _s min	r _{1s} min	α ≈	Dynamic	Static	
COM 3	GEFZ4S	0.19	0.5625	0.281	0.218	0.406	0.012	0.015	11	3	15	.013
COM 4	GEFZ6S	0.25	0.6562	0.343	0.25	0.5	0.012	0.022	13.5	4.4	22	.022
COM 5	GEFZ7S	0.3125	0.75	0.375	0.281	0.562	0.012	0.032	12	6	28	.031
COM 6	GEFZ9S	0.375	0.8125	0.406	0.312	0.656	0.012	0.032	10	7.4	37	.037
COM 7	GEFZ11S	0.4375	0.9062	0.437	0.343	0.687	0.012	0.032	8	8.4	42	.046
COM 8	GEFZ12S	0.5	1	0.5	0.39	0.813	0.012	0.032	9.5	12	58	.064
COM 9	GEFZ14S	0.5625	1.0937	0.562	0.437	0.906	0.012	0.032	9.5	15	73	.086
COM 10	GEFZ15S	0.625	1.1875	0.625	0.5	1	0.012	0.032	9.5	19	94	.110
COM 12	GEFZ19S	0.75	1.4375	0.75	0.593	1.187	0.012	0.044	9	28	141	.200
COM 14	GEFZ22S	0.875	1.5625	0.703	0.875	1.312	0.024	0.044	9.5	37	186	.261
COM 16	GEFZ25S	1	1.75	1	0.797	1.5	0.024	0.044	10	49	245	.385

Also available: Maintenance Free – PTFE Lined – COM...T, Stainless Steel – SSCOM

Common Interchanges (1/2" Bore): CRS 8



www.bl-bearings.com