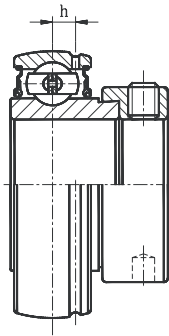
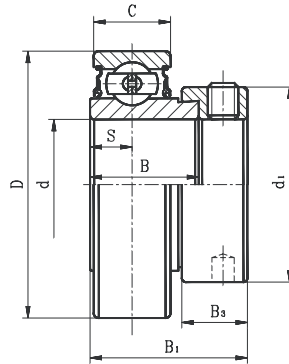


BALL BEARING INSERTS

SA LIGHT DUTY ECCENTRIC LOCKING COLLAR TYPE
CSA LIGHT DUTY CYLINDRICAL O.D. TYPE



SA
(WITH G SUFFIX)



CSA



- Narrow inner ring bearing
- Lubrication groove with hole on collar side and additional oil hole on opposite side (G suffix).

Bearing No.	Shaft Dia. d		Dimension (in) (mm)								Basic load rating (lbs)		Weight (lb)									
	(in.)	(mm)	D	C	B	B ₁	S	h	B ₃	d ₁	Dynamic	Static										
SA201G	1/2	12	1.5748	0.4724	0.7520	1.1260	0.2559	0.1417	0.5315	1.1260	2150	1070	0.31									
201-8G		15												40	12	19.10	28.60	6.5	3.6	13.5	28.6	
202G		5/8												17	40	12	19.10	28.60	6.5	3.6	13.5	28.6
202-10G		5/8												17	40	12	19.10	28.60	6.5	3.6	13.5	28.6
203G	11/16	17	1.5748	0.4724	0.7520	1.1260	0.2559	0.1417	0.5315	1.1260	2150	1070	0.29									
203-11G														11/16	17	40	12	19.10	28.60	6.5	3.6	13.5
CSA104-12	3/4	12	1.6535	0.4724	0.6354	1.0402	0.2362		0.5197	1.2992	2100	1120	0.26									
			42	12	16.14	26.42	6.0		13.2	33.0												
SA204-12G	3/4	20	1.8504	0.5512	0.8425	1.2165	0.2953	0.1575	0.5315	1.3110	2900	1500	0.40									
204G			47	14	21.40	30.90	7.5	4.0	13.5	33.3			0.43									
SA205-14G	7/8	25	2.0472	0.5906	0.8425	1.2165	0.2953	0.1693	0.5315	1.5000	3150	1770	0.46									
205-15G	15/16													52	15	21.40	30.90	7.5	4.3	13.5	38.1	
205G	1													52	15	21.40	30.90	7.5	4.3	13.5	38.1	
205-16G	1													52	15	21.40	30.90	7.5	4.3	13.5	38.1	
SA206-18G	1-1/8	30	2.4409	0.6299	0.9370	1.4055	0.3543	0.1969	0.6260	1.7520	4400	2500	0.77									
206G	30													62	16	23.80	35.70	9.0	5.0	15.9	44.5	
206-19G	1-3/16													62	16	23.80	35.70	9.0	5.0	15.9	44.5	
206-20G	1-1/4													62	16	23.80	35.70	9.0	5.0	15.9	44.5	
SA207-20G	1-1/4	35	2.8346	0.6693	1.0000	1.5315	0.3740	0.2244	0.6890	2.1890	5800	3400	1.23									
207-21G	1-5/16													72	17	25.40	38.90	9.5	5.7	17.5	55.6	
207-22G	1-3/8													72	17	25.40	38.90	9.5	5.7	17.5	55.6	
207G	35													72	17	25.40	38.90	9.5	5.7	17.5	55.6	
207-23G	1-7/16													72	17	25.40	38.90	9.5	5.7	17.5	55.6	
SA208-24G	1-1/2	40	3.1496	0.7087	1.1890	1.7205	0.4331	0.2441	0.7205	2.3740	6660	4100	1.50									
208-25G	1-9/16													80	18	30.20	43.70	11.0	6.2	18.3	60.3	
208G	40													80	18	30.20	43.70	11.0	6.2	18.3	60.3	
SA209-26G	1-5/8	45	3.3465	0.7480	1.1890	1.7205	0.4331	0.2559	0.7205	2.5000	7160	4700	1.68									
209-27G	1-11/16													85	19	30.20	43.70	11.0	6.5	18.3	63.5	
209-28G	1-3/4													85	19	30.20	43.70	11.0	6.5	18.3	63.5	
209G	45													85	19	30.20	43.70	11.0	6.5	18.3	63.5	
SA210-30G	1-7/8	50	3.5433	0.7874	1.1890	1.7205	0.4331	0.2559	0.7205	2.7520	7900	5200	1.83									
210-31G	1-15/16													90	20	30.20	43.70	11.0	6.5	18.3	69.9	
210G	50													90	20	30.20	43.70	11.0	6.5	18.3	69.9	
SA211-32G	2	55	3.9370	0.9449	1.2756	1.9055	0.4724	0.2835	0.8150	3.0000	9800	6600	2.57									
211-34G	2-1/8													100	24	32.50	48.40	12.0	7.2	20.7	76.2	
211G	55													100	24	32.50	48.40	12.0	7.2	20.7	76.2	
211-35G	2-3/16													100	24	32.50	48.40	12.0	7.2	20.7	76.2	
SA212-36G	2-1/4	60	4.3307	0.9449	1.3150	1.9409	0.4724	0.3150	0.8780	3.3150	10700	7400	2.86									
212G	2-1/4													110	24	33.40	49.30	12.0	8.0	22.3	84.2	
212-38G	2-3/8													110	24	33.40	49.30	12.0	8.0	22.3	84.2	
212-39G	2-7/16													110	24	33.40	49.30	12.0	8.0	22.3	84.2	

* Full cover metal shroud seal standard. Full contact rubber seal (2RS suffix) optional. Also available in free spinning design and/or with black oxide finish. Non-relubricatable units also available (remove G suffix). Contact factory.

