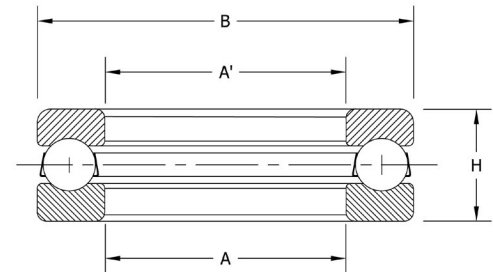


Ball Thrust Bearing

- Light Cross Section
- Single Direction
- Grooved Races



PART NUMBER	A		A ¹	B		H		BALLS		LOAD RATING Lbs.		SPEED LIMIT	BEARING WEIGHT Lbs.
	MM	INCH	INCH	MM	INCH	MM	INCH	No.	SIZE	STATIC	DYNAMIC		
2900	10	0.3937	0.402	26	1.0236	12	0.472	8	0.219	2950	2900	8800	0.08
2901	12	0.4724	0.480	28	1.1024	12	0.472	10	0.188	2700	2350	8300	0.09
2902	15	0.5906	0.598	31	1.2205	12	0.472	12	0.188	3250	2600	7800	0.10
2903	18	0.7087	0.717	35	1.3780	12	0.472	14	0.219	5200	3750	7400	0.12
2904	20	0.7874	0.795	37	1.4657	12	0.472	14	0.219	4450	3350	7000	0.13
2904-1/2	22	0.8661	0.874	42	1.6535	14	0.551	12	0.281	7350	5450	6200	0.21
2905	25	0.9843	0.992	45	1.7717	14	0.551	13	0.281	7950	5600	5900	0.21
2906	30	1.1811	1.189	50	1.9685	14	0.551	14	0.281	8550	5650	5700	0.27
2907	35	1.3780	1.386	55	2.1654	16	0.630	14	0.313	10600	6800	5100	0.32
2908	40	1.5748	1.583	60	2.3622	16	0.630	14	0.313	10600	6600	4800	0.33
2909	45	1.7717	1.780	68	2.6772	16	0.630	17	0.313	12800	7250	4500	0.43
2910	50	1.9685	1.976	74	2.9134	18	0.709	19	0.344	17400	9250	4100	0.59
2911	55	2.1654	2.173	78	3.0709	18	0.709	20	0.344	18300	9400	4000	0.60
2912	60	2.3622	2.370	82	3.2283	18	0.709	22	0.344	20100	9850	3050	0.63
2913	65	2.5591	2.567	90	3.5433	20	0.787	20	0.375	21700	10800	3500	0.78
2914	70	2.7559	2.764	95	3.7402	20	0.787	22	0.375	23900	11300	3400	0.88
2915	75	2.9528	2.961	100	3.9370	20	0.787	23	0.375	25000	11400	3325	0.92
2916	80	3.1496	3.157	110	4.3307	22	0.866	22	0.438	32600	14900	2975	1.30
2917	85	3.3465	3.354	115	4.5276	22	0.866	24	0.406	30600	13300	2900	1.50
2918	90	3.5433	3.551	120	4.7244	22	0.866	24	0.406	30600	13100	2850	1.60
2919	95	3.7402	3.748	130	5.1181	25	0.984	23	0.500	44400	19500	2550	2.00
2920	100	3.9370	3.945	135	5.3150	25	0.984	24	0.500	46400	19600	2500	2.30
2921	105	4.1339	4.142	140	5.5115	25	0.984	26	0.500	50200	20500	2470	2.20
2922	110	4.3307	4.339	145	5.7087	25	0.984	28	0.500	54100	21200	2420	2.30
2923	115	4.5276	4.535	150	5.9055	25	0.984	26	0.500	50200	20000	2400	2.60
2924	120	4.7244	4.732	160	6.2992	27	1.063	28	0.531	56700	22300	2230	2.40
2925	125	4.9213	4.929	165	6.4961	27	1.063	26	0.531	56700	22100	2200	3.60
2928	140	5.5118	5.520	185	7.2835	31	1.220	26	0.625	78500	30000	1930	5.40

Materials: Rings and balls are constructed of thru-hardened 52100 steel. Retainer is constructed of high quality low carbon steel or machined bronze.

US Corporate Headquarters:
2100 Pacific Street,
Hauppauge NY, 11788



Email: sales@tritanpt.com
Phone: 800-645-5088
www.tritanpt.com