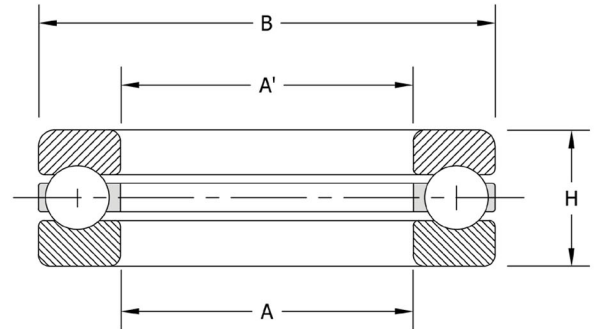


Ball Thrust Bearing

- Medium Cross Section
- Single Direction
- Grooved Races



PART NUMBER	A		A ¹	B		H		BALLS		LOAD RATING Lbs.		SPEED LIMIT	BEARING WEIGHT Lbs.
	MM	INCH	INCH	MM	INCH	MM	INCH	No.	SIZE	STATIC	DYNAMIC		
3905	25	0.9843	0.992	52	2.0472	16	0.630	12	0.313	9050	6450	5300	0.33
3906	30	1.1811	1.189	60	2.3622	19	0.748	12	0.375	13000	8900	4500	0.60
3907	35	1.3780	1.386	68	2.6772	23	0.886	12	0.438	17800	12000	3050	0.88
3908	40	1.5748	1.583	76	2.9921	25	0.984	12	0.500	23200	15300	3360	1.20
3909	45	1.7717	1.780	85	3.3465	28	1.102	12	0.563	29300	18900	3050	1.70
3910	50	1.9685	1.976	92	3.6220	31	1.221	12	0.625	36200	23000	2750	2.20
3911	55	2.1654	2.173	100	3.9370	33	1.299	12	0.656	39900	24800	2550	2.50
3912	60	2.3622	2.370	106	4.1732	35	1.378	12	0.688	43800	26800	2425	3.20
3913	65	2.5591	2.567	112	4.4094	36	1.417	12	0.750	52200	31600	2300	3.50
3914	70	2.7559	2.764	120	4.7244	38	1.496	14	0.750	60900	34200	2160	4.30
3915	75	2.9528	2.961	128	5.0394	41	1.614	14	0.813	71400	39700	2000	4.90
3916	80	3.1496	3.157	136	5.3543	44	1.732	12	0.875	71000	41100	1875	6.20
3917	85	3.3465	3.354	145	5.7087	47	1.850	14	0.938	95100	51700	1750	7.60
3918	90	3.5433	3.551	155	6.1024	50	1.969	12	1.000	92800	52400	1650	9.40
3919	95	3.7402	3.748	165	6.4961	54	2.126	12	1.063	105000	57000	1525	11.5
3920	100	3.9370	3.945	172	6.7716	57	2.244	12	1.125	117000	62000	1460	13.1
3921	105	4.1339	4.142	180	7.0866	60	2.362	12	1.250	145000	73200	1440	15.1
3922	110	4.3307	4.339	190	7.4803	63	2.480	12	1.250	145000	71700	1490	17.8
3923	115	4.5276	4.535	200	7.8740	66	2.598	12	1.375	175000	83500	1250	20.3
3924	120	4.7244	4.732	210	8.2677	69	2.717	14	1.375	205000	91300	1200	23.5

Materials: Rings and balls are constructed of thru-hardened 52100 steel. Retainer is constructed of high quality low carbon steel or machined bronze.

US Corporate Headquarters:
2100 Pacific Street,
Hauppauge NY, 11788